

SOLID SIGNAL'S HANDS ON REVIEW

TELEVES DATBOSS UHF ANTENNA



Model 149983



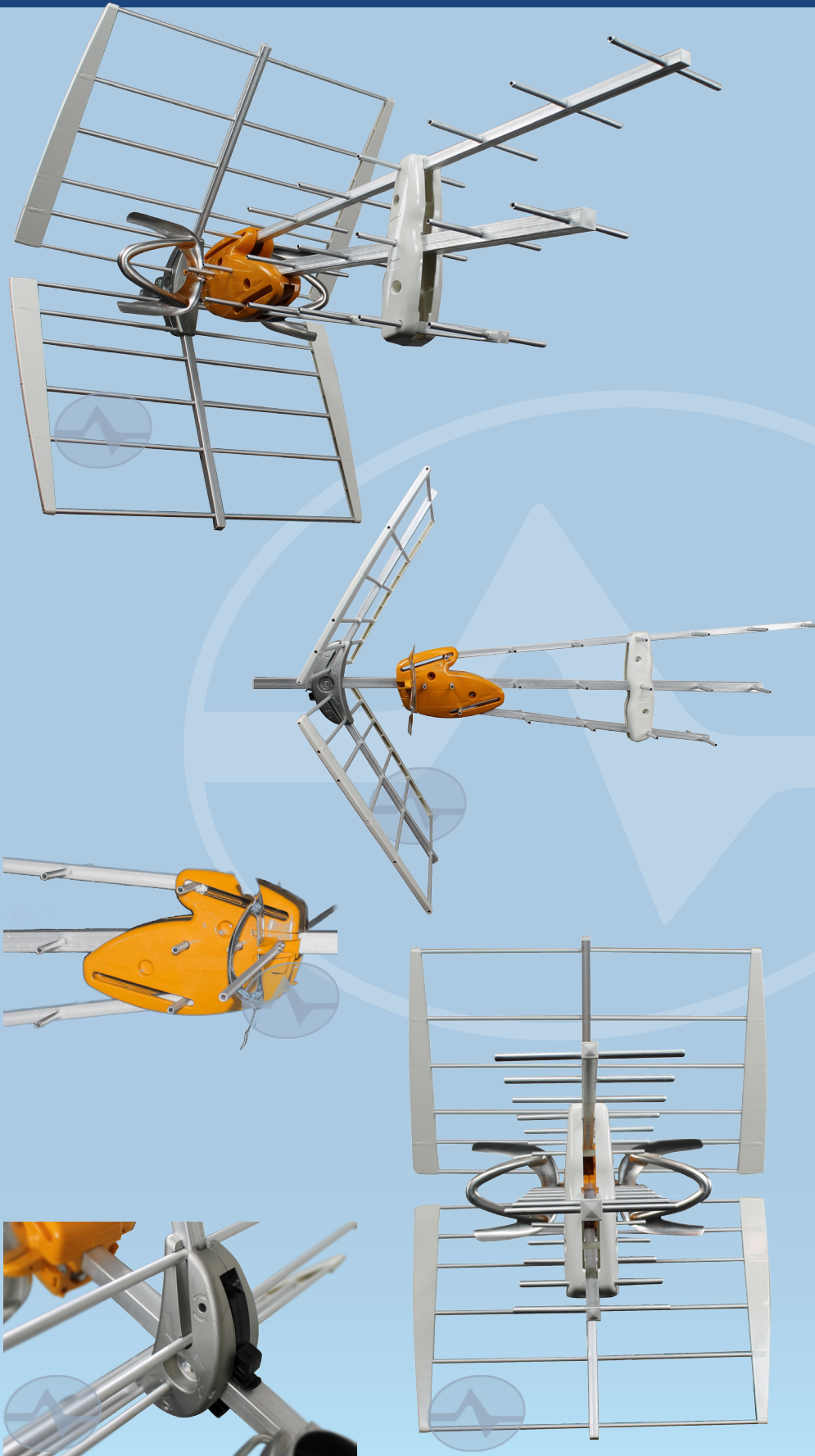
Affordable Quality



European-made quality doesn't have to break the bank. If you're looking for superior performance from a UHF-only antenna, look no further than the [Televes DATBOSS UHF antenna](#). Using the same advanced "T-Force" manufacturing technologies as Televes' more expensive antennas, it delivers a massive increase in both raw and amplified gain over last year's antenna, which was already at the top of the performance heap. If you're ready to upgrade your over-the-air performance, ask yourself the following questions:

- **Do I need to receive channels from up to 60 miles away?**
- **Do I have a roof or attic space where I can mount an antenna?**
- **Can I install this antenna myself?**
- **Do I need an antenna that will stand up to the elements?**
- **Can I do without VHF reception?**
- **How important is price?**

The antenna itself



Throughout the world, Televes antennas are known for quality, and instantly recognizable for the bright orange plastic they use. When you see that color, you know you are dealing with an antenna of superior construction. The DATBOSS uses the highest-quality laminated aluminum and UV-resistant plastics to ensure a lifetime of performance once mounted outside.

One characteristic of Televes' entire DATBOSS line is the triple set of "directors" in the front. These give the antenna its characteristic shape and help bring in more distant signals. The patented design used three sets of directors of unequal length to help focus ground-based signals and reject signals from cell towers.

As the least expensive part of the DATBOSS family, this antenna lacks the VHF dipoles or longer directors of its more expensive siblings but still delivers impressive performance throughout the UHF band.

No matter where you look, you can see the exceptional quality of the joints and connectors. The mating assembly where the reflectors meet the main body of the antenna looks like solid steel and holds up very well.

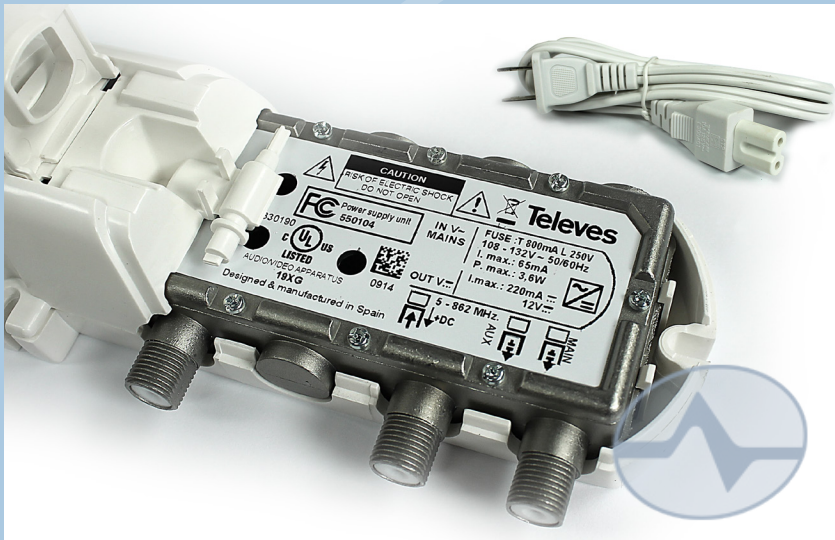
The optional amplifier



Amplified antennas are all the rage, because they let you drive multiple TVs and help you with fringe reception issues. This antenna comes with an innovative amplification system that is much better than others on the market for several reasons.

Passive amplification

Most mast-mounted amplifiers and amplified antennas put the amplifier outside near the antenna. This is done so that amplification takes place before any losses due to the cable between the antenna and the home. When you use an amplifier like that, you need to use **RG6 cable with a solid copper core**. This is the only cable that will actually carry power up the line so the amplifier can actually work. However, you can't get that kind of cable at your local home store and you may not want to climb all around to install new cable.



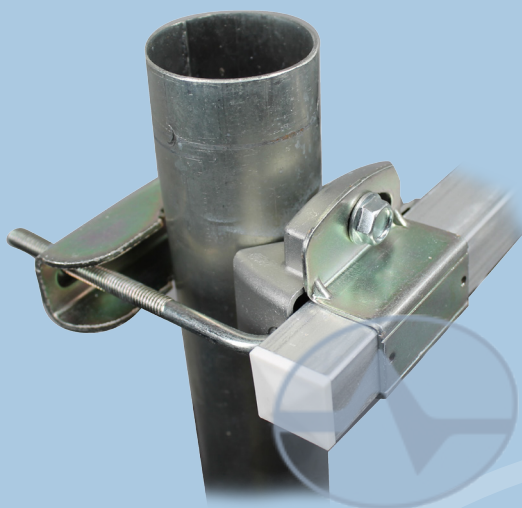
That's why the DATBOSS is passively amplified, and it's one of the few antennas on the market

that is. Most amplified antennas won't work at all if they're not powered, but the DATBOSS will. If you don't need an amplifier, don't use it.

The DATBOSS includes this power injector that sends power up to the amplifier and also lets you run up to 2 TVs without adding an additional signal. It plugs into the wall inside and safely does its job. If it becomes unplugged, the antennas will still function and the power supply may be completely bypassed if you don't feel you have a need for amplification. If you are less than 30 miles from broadcast towers or if you see odd interference on many channels, you may not need an amplifier and may be better off without it. It's your decision. While this power injector looks like Televes' own distribution amplifier, it does not have any amplification within in. The amplifier assembly is located within the antenna itself.

Another innovative feature of this antenna is a built-in 1x2 splitter that allows you to run two televisions from the one power supply unit. If only one television is used, it is best to put a terminator on the unused port. Both ports have the same output level, however Televes' materials state that the rightmost port should be used if only one TV is attached.

Installation



The DATBOSS series of antennas mount to a mast using a hybrid adjustable clamp system that puts the antenna slightly off center on a mast so it can be mounted slightly lower. This reduces stress on the mast and makes the antenna less likely to rotate in high winds compared to antennas that mount to the top of the mast. The clamp can be adjusted to allow the antenna to tilt up and down about 5 degrees before being locked in, and in addition to a toothed bar as you generally see on this sort of antenna, there's also a notched, ribbed steel piece on the opposite side of the bar to help the antenna stay where you put it.

The clamp is designed to make a slight indentation in the antenna to allow it to hold securely.

Who is Televes?

They're not a well-known company in the US... yet. Solid Signal chose to partner with Televes after an extensive worldwide search because Televes stands for the same things we stand for: quality, performance, and customer satisfaction. Televes is based in Santiago de Compostela, Spain and designs and manufactures all their products in Europe. The manufacturing quality is far above other similar products.

The company has been around since 1958 and is a worldwide leader in antennas, satellite products and test equipment. As they grew, they developed ways to manufacture as much as possible within their own facility. As a result, they have some of the most advanced fabrication methods in the world. They start with raw materials like aluminum ingots, plastic pellets and metal sheets, and they custom-fabricate every part. This includes the manufacture of their own circuit boards, as well as laser cutting, etching, CNC machining, and metal stamping.

Televes equipment is found worldwide in mission-critical control rooms and is carried by installation professionals.

If you think Televes products look similar to Chinese-made products, there's a reason for that; they're the most popular antenna brand in Europe and therefore an easy target for reverse-engineering. The difference is obvious when you actually get your hands on an antenna, though. This is a solidly-built product designed to last for years.

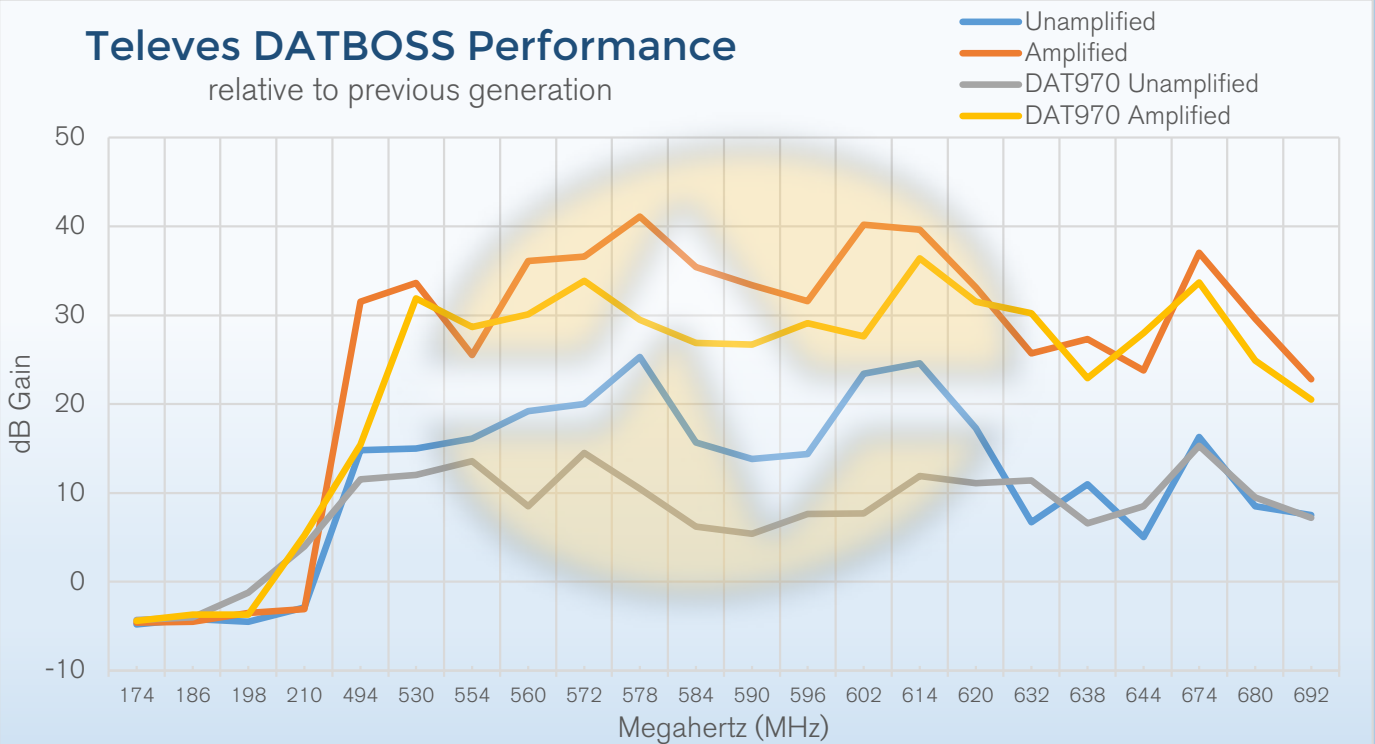
Solid Signal is the exclusive direct retailer and distributor of Televes products in the US and we've worked hard to bring Televes antennas to our customers at a price that compares to much lower-quality antennas. We offer full technical support for the Televes line in our Novi, Michigan facility, ensuring the best possible technical support.



Testing and Performance

Televes DATBOSS Performance

relative to previous generation

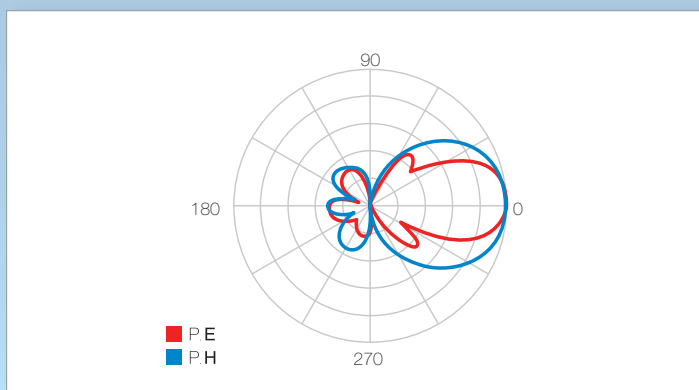


The DATBOSS shows superior rejection of VHF frequencies whether amplified or unamplified, just like last year's model. However, the new model shows significant improvements in both raw and amplified gain in the UHF range up to 620 MHz. This is the critical range since everything above that level will be used for LTE internet within two years.

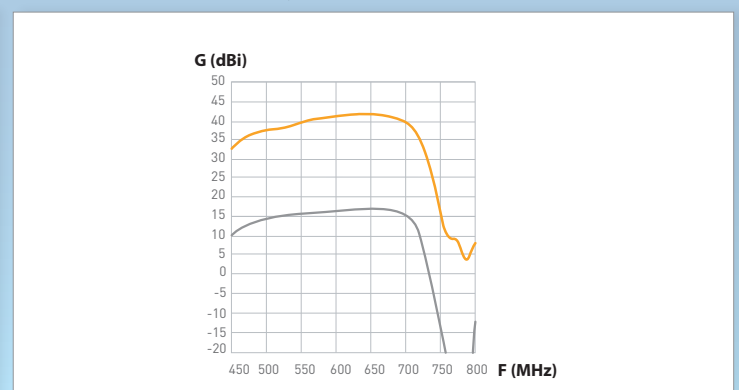
Real-world testing was conducted between the two antennas measuring gain relative to three feet of bare copper wire arranged as a dipole. Laboratory testing shown below was done in Santiago de Compostela, Spain under exacting conditions in Televes' own laboratories.

This antenna outperforms all other antennas in its class in the key frequency ranges required for over-the-air television reception. Combined with excellent build quality, this makes the DATBOSS stand out from the competition.

RADIATION PATTERN



FREQUENCY RESPONSE



LTE filtering



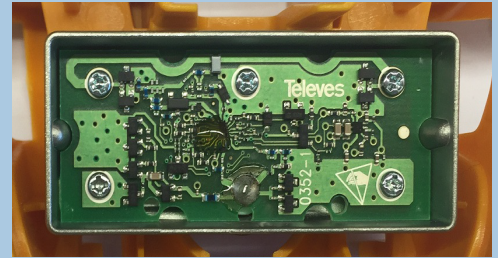
Televes antennas are the only brand to incorporate LTE filtering into their full antenna line. Every single antenna is designed to reject LTE signals from US carriers. This is incredibly important because as cell carriers build more towers,

there's an ever-growing chance that your home or office is going to be very near one, and that the LTE signal will be a lot stronger than distant antenna signals.

LTE provides wireless internet to cell phones using frequencies that were once used for TV antennas. Even though those frequencies aren't used anymore, older antennas will still pick them up, and newer antennas can as well depending on their manufacture. LTE signals can even affect channels on "fractional" frequencies -- For example LTE transmissions at 792MHz can also affect broadcasts at 396 and 198MHz, which are half and one-quarter of the frequency used by LTE. By blocking LTE transmissions completely you have the best chance of picking up all the channels you want, interference-free.

T-Force Manufacturing

Televes' new and exclusive T-FORCE manufacturing process uses monolithic microwave integrated circuits (MMIC), for a new level of quality and reliability. All of Televes' amplifiers and circuit boards are made at their European facilities to exacting tolerances. This results in a level of quality that has not been seen before in residential antennas manufacturing.



All Televes amplified antennas use the BOSS-TECH amplifier which actively monitors frequencies in the antenna range and applies auto gain control to allow maximum amplification across the entire frequency range. Less expensive, Chinese-made antenna amplifiers simply provide excess amplification which can actually make a signal less useful, while creating noise that can never be removed from the line.

Televes' amplifiers achieve a class-leading 1.6dB noise figure across the entire UHF and VHF spectrum in independent testing. This means more of the amplified signal is actually usable, even if multiple splitters and long lines are used. Televes antennas can be powered using Televes' own mast-mounted amplified combiners, for maximum performance and maximum long-range reception.



Should you buy this antenna?

This antenna has everything that most people will need for reception from up to 60 miles away. It is compact, although it doesn't meet with some HOA rules. (Choose the [Televes DigiNova BOSS](#) for a more compact package that works indoor and within HOA neighborhoods.) UHF performance is stronger than any antenna in its class, and it provides clean amplification, VHF rejection and LTE filtering. Its advanced amplifiers include auto gain control for the best possible experience, and the build quality is vastly superior to Chinese-made rivals. Compared to long-range versions, this antenna allows for reception from more directions.

For top performance in an antenna that should last well over a decade, choose the [Televes DATBOSS](#) antenna today!