

Solid Signal's

HANDS ON REVIEW



SureCall Flare
Home/Office
Cell Booster

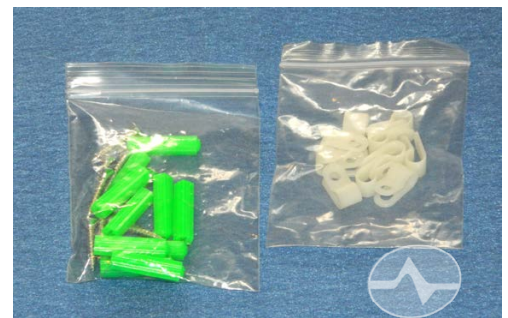
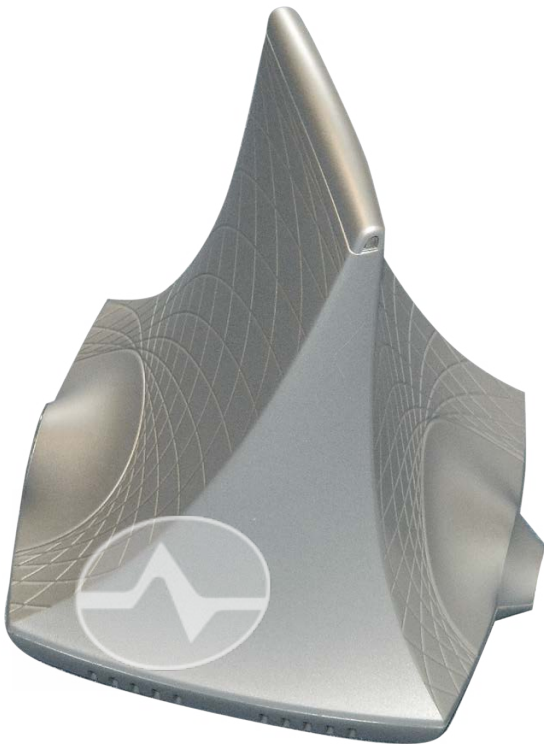


Power to the people



Cell boosters have almost always looked like plain metal boxes full of knobs. Sure, you don't buy a booster for its looks but on the other hand, if a booster's really ugly it's likely to be put on a shelf or in a closed cabinet. That makes it less effective, so looking stylish will actually make the booster look better. That's the idea behind SureCall's latest, the [Flare](#). Flare is a next-generation booster designed for superior performance. By using a unique design to separate the booster's indoor antenna from its electronics, it's possible to get better range and better coverage... up to 2,500 square feet of coverage for both voice and data. But is the Flare all it's cracked up to be? Let's take a look, kick the tires, and compare it to other boosters in its price range.

What's in the package

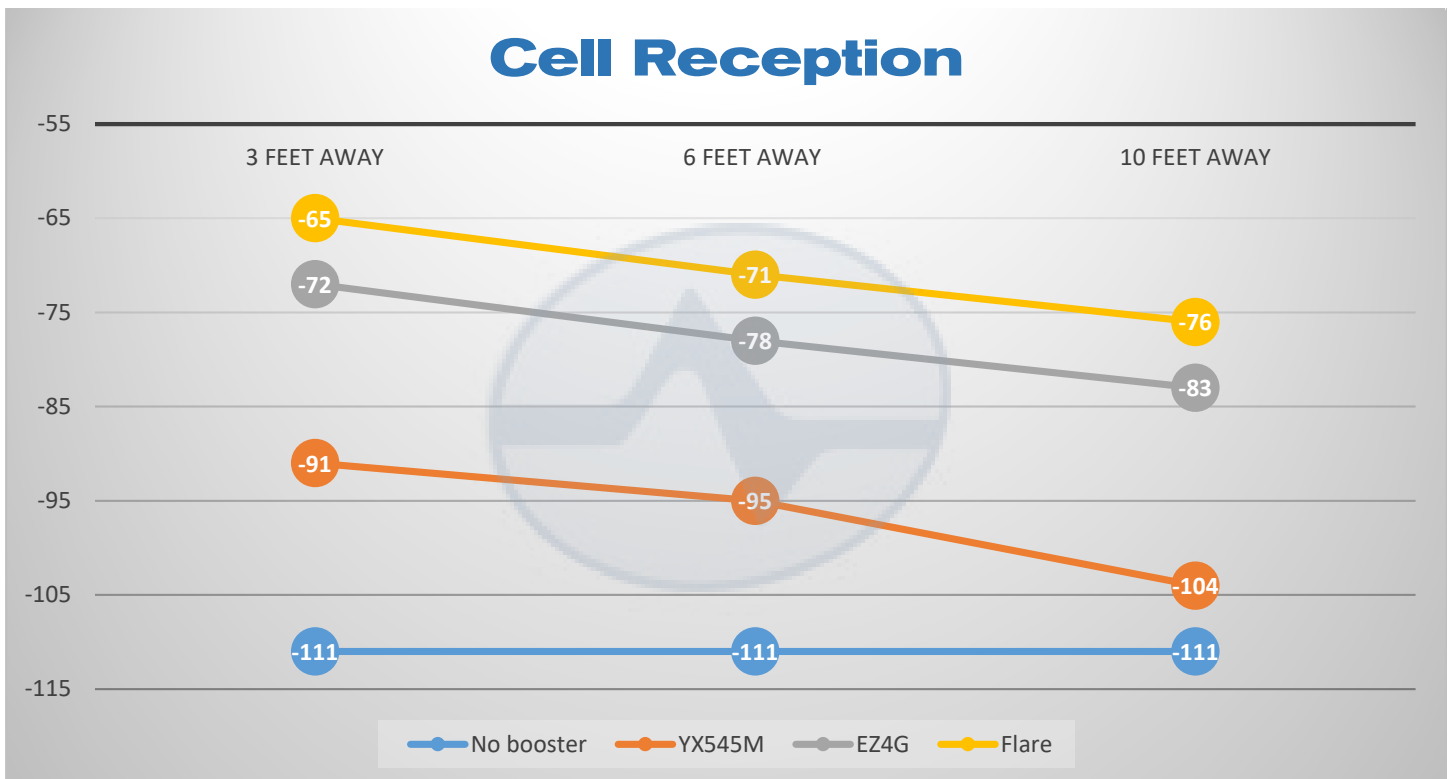


The Flare is an attractive booster from every angle, with nary a straight line in sight. If you didn't know it was a booster, you probably wouldn't know what it was. Other than the indicator lights on the front, there isn't a lot to even let you know that it's an electronic device.

The booster comes with everything you'll need including a high-powered outside antenna with mounting options including wall anchors and wire clips. You also get 50 feet of high quality RG6 cable and an AC adapter, neither of which are pictured here.

Installation of the booster is simple. There's one cord coming from it that terminates in a connector for the outdoor antenna and a connector for the AC adapter. Mount the antenna outside, at least 15 feet from the booster, plug it in, and you'll be enjoying great cell service before you know it!

Here's how well it works



The test regimen was simple. I tested voice performance with no booster, with an ancient zBoost YX545M (which was one of the most powerful budget boosters at the time), and against the [SureCall EZ4G](#). Test data for a booster-free environment and for the YX545M were consistent with prior data, so I used prior measurements for EZ4G.

Voice performance was used to ensure apples-to-apples comparison since the YX545 does not boost 4G. However, 4G/LTE performance on AT&T's network was consistent with performance on voice, so I expect these numbers to hold up for data on multiple networks.

EZ4G was a strong contender, but Flare beat it in every test, not surprisingly due to its outdoor antenna. Flare was mounted away from a window, while EZ4G needs to face out a window in order to get the best results. That means Flare might have even more acceptance from family members who won't complain that the window's being obscured.

Overall, performance was 20-30dB better than YX545M (meaning 100 - 1000 times more power) and about 6dB better than EZ4G (meaning about 5 times more power.) That's enough to justify the price upgrade, which is not that much. For a permanent installation, I'd recommend the Flare for easy installation and for the fact it's less obvious in a room.

Wrapping it all up

SureCall's Flare is the perfect booster for small homes or offices. You're likely to get strong performance for 3-4 average-sized rooms and the effect continues out even further depending on the composition of the walls and the kind of wiring that is in them. Every home and office is different of course.

Flare is a winner especially if you need to provide good LTE coverage. While other companies offer a discounted booster that doesn't cover LTE (which is perfectly fine if you don't need it, for example if everyone in the area has good Wi-Fi) SureCall comes through with a booster that boosts LTE at a price similar to other manufacturers' non-LTE booster.

It looks stylish to be sure, but under that style is the same industrial strength construction that you'll find in the whole SureCall line. It's a well-made booster that should last you for years, and unlike some of the boosters we've seen in past years, you won't end up replacing antennas or power adapters before the unit wears out.



[Shop for the Flare home/office cell booster from SureCall at SolidSignal.com now!](#)

SolidSignal.com is your source for DIRECTV equipment, supplies, and support. We have over 10 years' experience in installing and supporting satellite equipment. Our technical staff is ready to answer all your questions!



visit **SOLIDSIGNAL.COM** for the best selection of equipment and supplies for the high-end installer or do-it-yourselfer!

FORUMS.SOLIDSIGNAL.COM is your source for 24-hour support!



BLOG.SOLIDSIGNAL.COM is your information destination for news, reviews, and tips!

